

# CONTINUOUS CLOSURES

## Portions of East Way & Center Way

Monday, January 13 at 1AM through Monday, January 27 at 6AM

### ACTIVITY

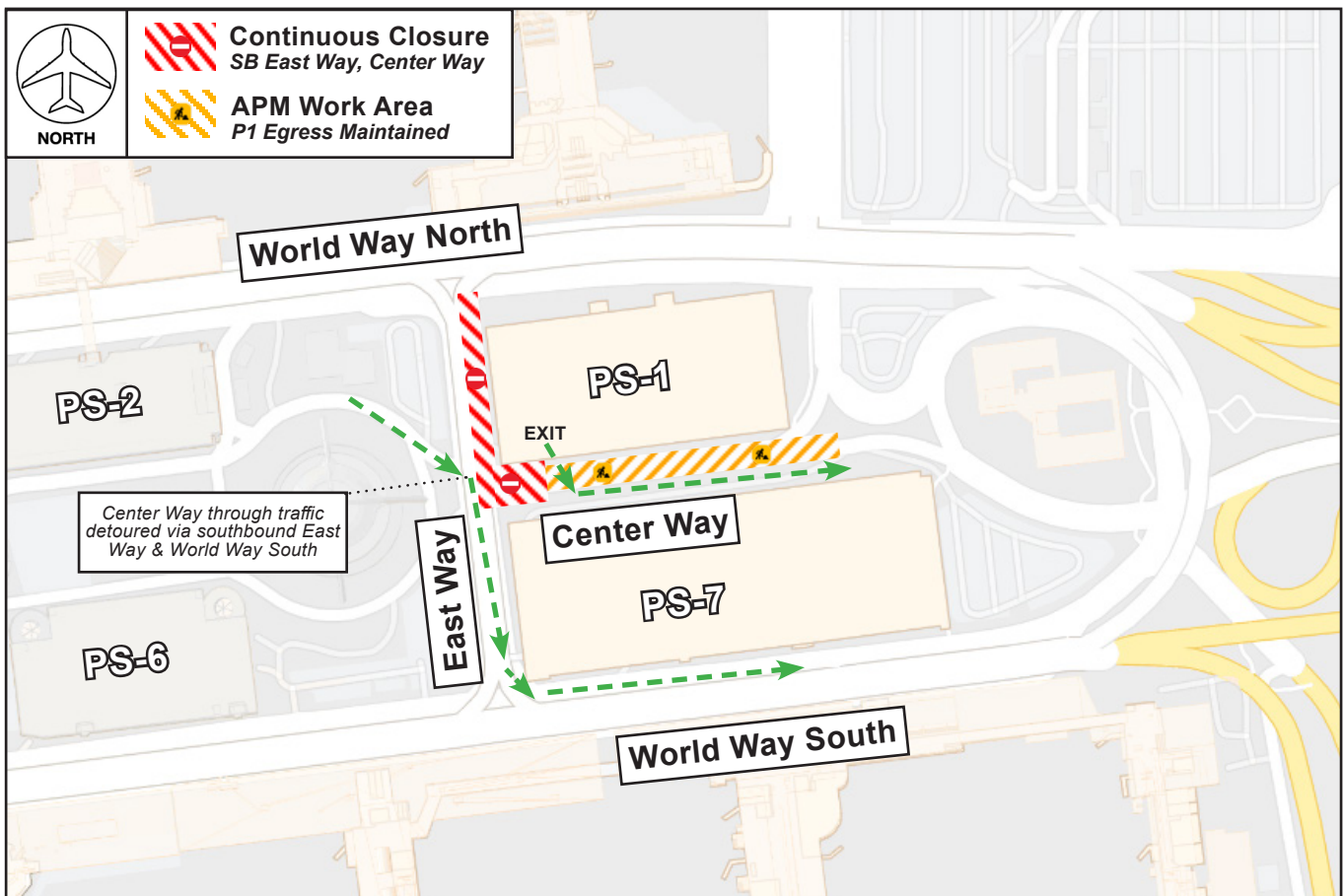
Southbound East Way from World Way North to Center Way, including the intersection of Center Way at East Way, will be closed continuously beginning Monday, January 13 at 1AM through Monday, January 27 at 6AM to facilitate the installation of Automated People Mover foundation piles.

### IMPACTS CLOSED

- Southbound East Way from World Way North to Center Way
- Center Way at East Way intersection (no through traffic on Center Way)

### MAINTAINED

- Parking Structure 1 egress maintained at all times
- Vehicular and pedestrian traffic maintained at all times via detours
- Temporary signage and traffic control officers will be in place as needed to assist with wayfinding



LAX Construction Hotline: 310-649-5292 | [@FlyLAXAirport](#) | [f LAInternationalAirport](#)  
[LAXConstructionHotline@LAWA.org](mailto:LAXConstructionHotline@LAWA.org)

C.A.L.M.

Coordination and Logistics Management Team