

CTA ROADWAY IMPACTS

Terminal 2.5 APM Pedestrian Bridge Construction

Monday, September 13 through Tuesday, October 26, 2021

Nightly between 12AM and 6AM



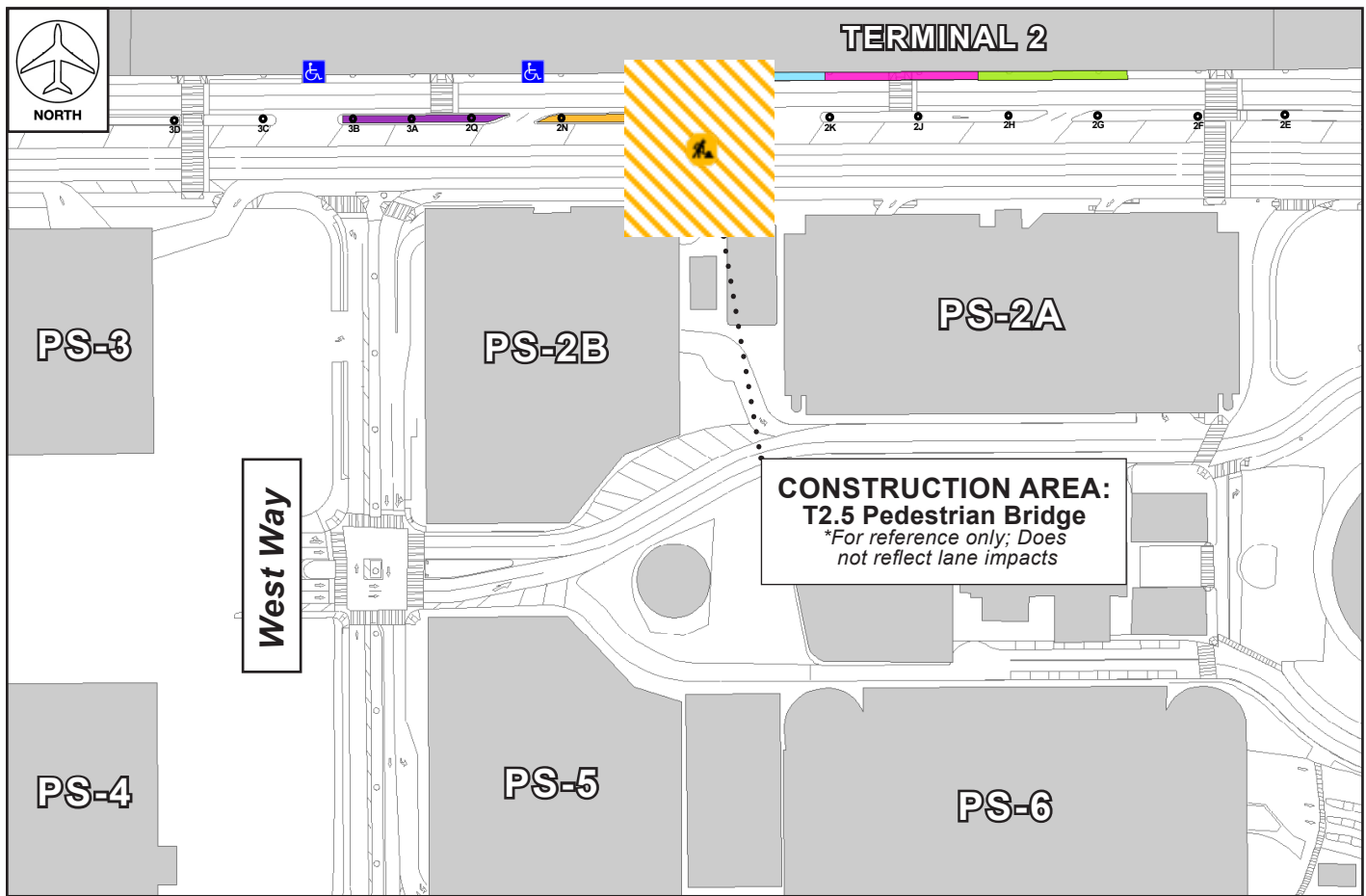
ACTIVITY

The Automated People Mover project will construct a new Pedestrian Bridge over the roadways between Terminals 2 and 3 to connect the APM's future Center CTA Station with the future Terminal 2.5 Vertical Core. Construction will require various nightly lane restrictions and / or full closures on World Way North at Terminal 2.5 between Monday, September 13 and Tuesday, October 26.

Full Arrivals Level closures are currently scheduled for Tuesday, September 14 through Thursday, September 30 and Friday, October 22. Full Departures Level closures are currently scheduled for Tuesday, September 21 through Friday, September 24 and Wednesday, September 29. Work will occur Tuesdays through Saturdays only for limited overnight hours. Additional notifications will be issued with more details for the scheduled full closures on both levels.

Detours for shuttle operations, vehicular and pedestrian traffic will be implemented as needed. Signage and flaggers will be in place to assist with wayfinding, including directing pedestrians to alternate shuttle stops when certain existing stops are closed for this construction.

Please watch for posted signage and prepare to follow all detour routes during all phases of work. Always use caution when traveling through construction areas.



LAX Construction Hotline: 310-649-5292 | @FlyLAXAirport | LAInternationalAirport
 LAXConstructionHotline@LAWA.org