



TERMINAL 5 RENTAL CAR STOP Relocation to Columns 4J / 5B

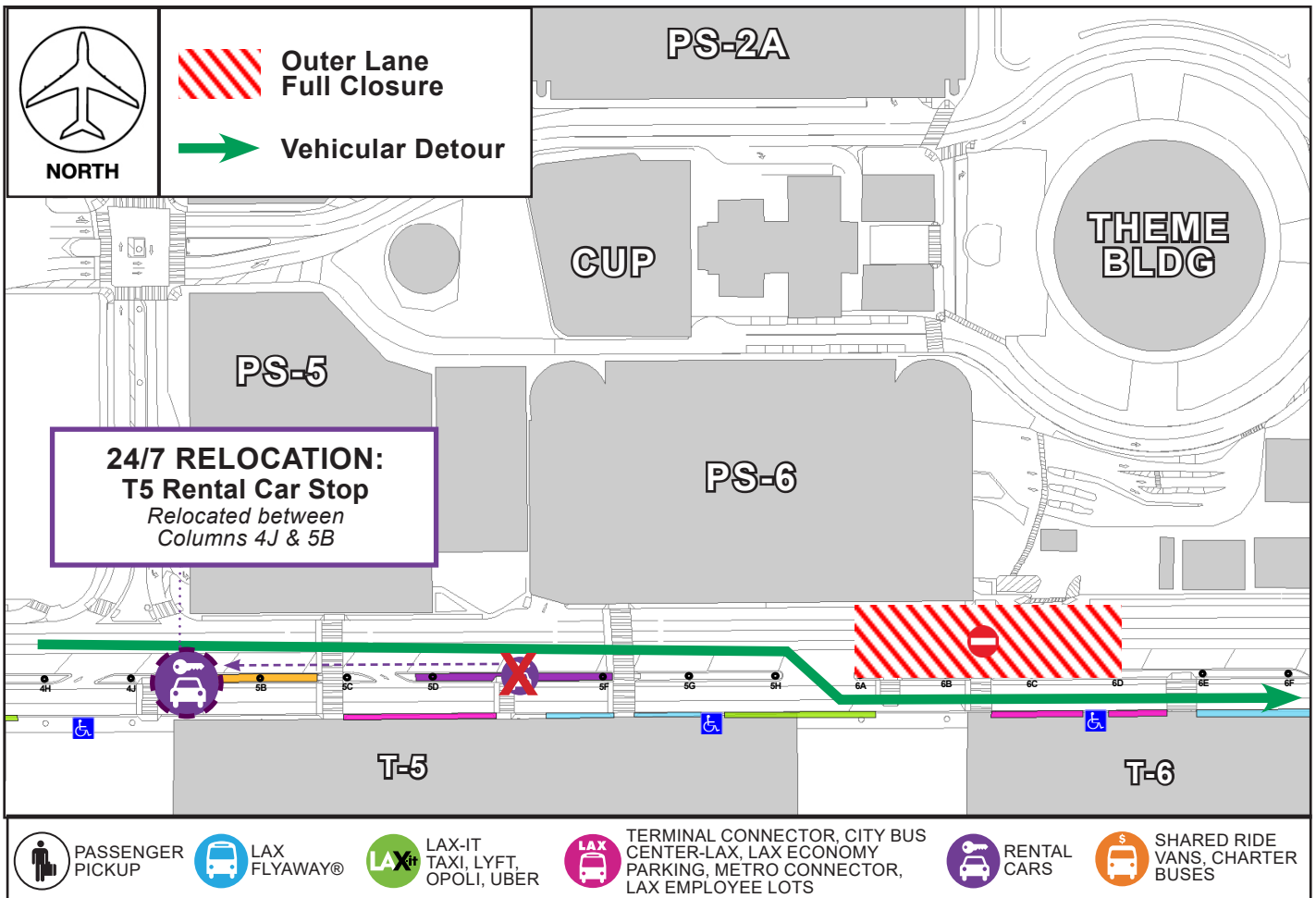
Through Wednesday, May 25, 2022 | Continuous (24/7) Relocation

ACTIVITY

The APM project will construct a Pedestrian Bridge over the roadways between Terminals 5 and 6. To facilitate this work, Arrivals Level Outer Lanes at Terminal 5.5 will be closed nightly with all traffic detoured to Inner Lanes, as illustrated below.

To assist with the 24/7 maintenance of traffic, the Terminal 5 Rental Car Shuttle Stop located between Outer Lane Columns 5D and 5F will be relocated to the west between Columns 4J and 5B (co-located with existing Shared Ride Van Stop) through Wednesday, May 25.

Signage and flaggers will be in place to assist with vehicular and pedestrian wayfinding. Please watch for signage and prepare to follow detour routes. Use caution when traveling through construction areas.



LAX Construction Hotline: 310-649-5292 | @FlyLAXAirport | LAInternationalAirport
LAXConstructionHotline@LAWA.org